



EU/European Policies and Their Implications for Inter-regional Relations

13:00-15:30, Kant Room, IEE-ULB

This workshop brings together early-career researchers from Belgian and Japanese universities

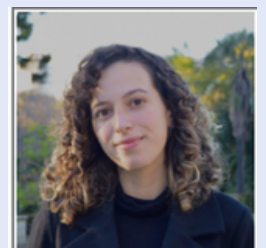
SPEAKERS

Natsuko D'April is a PhD student in political science at the Center for the Study of Political Life (CEVIPOL) of the ULB and Aspirante FNRS. Her project is entitled "France and Japan, two public diplomacies in comparison (1990-2022), or how the construction of the Nation conditions its promotion" and compares the cultural diplomacies of these two countries.



Gustavo Müller is a senior researcher at the Leuven Centre for Global Governance Studies at KU Leuven. He holds a double PhD from the University of Warwick (UK) and ULB. His research focuses on the external action of the EU, EU-Latin America relations, comparative and inter-regionalism, and the legitimation of global governance institutions.

Maria Martins is a luzo-brazilian young researcher, having been a research assistant at the Leuven Centre for Global Governance Studies and currently working at UNU-CRIS. Maria's research focuses on inter-regional relations between the EU and Latin America, in particular, Brazil, and its cooperation in the field of human rights.



Hikaru Yoshizawa is an associate professor at the Faculty of Law, Kansai University (Japan), where he teaches courses on the international political economy among others. His research centers on the political economy of the EU, especially the external dimension of its competition policy.

EU/European Policies and Their Implications for Inter-regional Relations

Chair

François Foret (President of the IEE-ULB)

Venue

Université libre de Bruxelles (ULB)

Institute for European Studies (IEE), Kant Room

Avenue Franklin D. Roosevelt 39, 1050, Brussels (Belgium)

AGENDA

- 13:00 - 13:05 **Opening remarks**
François Foret (President of the IEE-ULB)
- 13:05 - 13:45 Presentation 1
**France and Japan, a comparison of two public diplomacies (1990-2022)
or how the construction of the Nation conditions its promotion**
by Natsuko D'Aprile (ULB-CEVIPOL)
- 13:45 - 14:25 Presentation 2
Relaunch aborted? The structural challenges of the EU-Brazil partnership
by Gustavo Müller (KU Leuven) and Maria Martins (KU Leuven)
- 14:25 - 14:40 **Break**
- 14:40 - 15:20 Presentation 3
**The EU's regulatory influence on digital platform firms:
lessons from three Google antitrust cases**
by Hikaru Yoshizawa (Kansai University)
- 15:20 - 15:25 **Closing remarks**
Yutaka Maeda (President of Kansai University)

- Co-organized by IEE-ULB and Kansai University European Center
- This event celebrates a new agreement between ULB and Kansai University to be signed on 12 March 2024.